

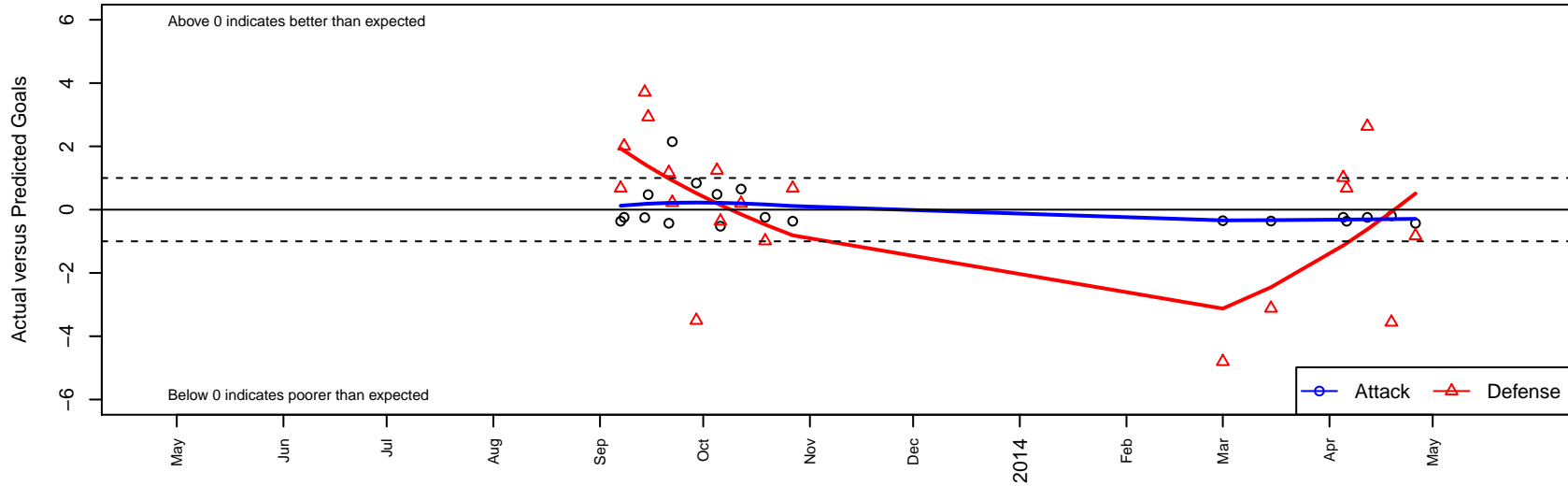
Molalla YS Pride White G00

, OR
 G00 total strength=224
 attack=0.12 defense=0.15
 fall league = OPL Third Division U13, Spr OYS
 alt names used:
 MYS Pride White
 MYS – Seward

Venues played:
 OPL Third Division U13
 Spr OYS G00 Spring White



Molalla YS Pride White G00
 Dots are actual minus expected GF (blue circles) and GA (red triangles).
 Blue line is smoothed change in attack strength. Red is smoothed change in defense strength.



| | date | home | | away | | venue | pred.home | pred.away |
|-------|-------------|---------------------------------|----|------------------------------------|----|--------------------------|------------------|------------------|
| 11962 | 2014-04-26 | Molalla YS Pride White G00 | 0 | BSC Portland White G00 | 5 | Spr OYS G00 Spring White | 0.43 | 4.17 |
| 11943 | 2014-04-19 | Molalla YS Pride White G00 | 0 | Tualatin Hills Select Tomasini G00 | 14 | Spr OYS G00 Spring White | 0.20 | 10.44 |
| 11876 | 2014-04-12 | PCU Black G00 | 3 | Molalla YS Pride White G00 | 0 | Spr OYS G00 Spring White | 5.63 | 0.24 |
| 11822 | 2014-04-06 | Molalla YS Pride White G00 | 0 | Westside Timbers Mundial TS G00 | 2 | Spr OYS G00 Spring White | 0.37 | 2.68 |
| 11778 | 2014-04-05 | Eastside Timbers White G00 | 4 | Molalla YS Pride White G00 | 0 | Spr OYS G00 Spring White | 5.01 | 0.24 |
| 11617 | 2014-03-15 | NEU Lyonnais Blue G00 | 7 | Molalla YS Pride White G00 | 0 | Spr OYS G00 Spring White | 3.88 | 0.36 |
| 11433 | 2014-03-01 | Washington Timbers Burgundy G00 | 10 | Molalla YS Pride White G00 | 0 | Spr OYS G00 Spring White | 5.20 | 0.35 |
| 10472 | 2013-10-27 | Molalla YS Pride White G00 | 0 | Westside Timbers Mundial TS G00 | 2 | OPL Third Division U13 | 0.37 | 2.68 |
| 10246 | 2013-10-19 | Molalla YS Pride White G00 | 0 | Eastside Timbers White G00 | 6 | OPL Third Division U13 | 0.24 | 5.01 |
| 10067 | 2013-10-12 | Washington Timbers Burgundy G00 | 5 | Molalla YS Pride White G00 | 1 | OPL Third Division U13 | 5.20 | 0.35 |
| 9960 | 2013-10-06 | THUSC Kryptonite G00 | 4 | Molalla YS Pride White G00 | 0 | OPL Third Division U13 | 3.63 | 0.52 |
| 9868 | 2013-10-05 | Molalla YS Pride White G00 | 1 | Crossfire OR WUSC Celtic Navy G00 | 2 | OPL Third Division U13 | 0.52 | 3.24 |
| 9765 | 2013-09-29 | EMFC Sol Black G00 | 8 | Molalla YS Pride White G00 | 1 | OPL Third Division U13 | 4.50 | 0.16 |
| 9621 | 2013-09-22 | BSC Hood River Blue Dynamos G00 | 1 | Molalla YS Pride White G00 | 3 | OPL Third Division U13 | 1.23 | 0.85 |
| 9544 | 2013-09-21 | Molalla YS Pride White G00 | 0 | BSC Portland White G00 | 3 | OPL Third Division U13 | 0.43 | 4.17 |
| 9458 | 2013-09-15 | Molalla YS Pride White G00 | 1 | Crossfire OR LOSC Rain G00 | 1 | OPL Third Division U13 | 0.53 | 3.93 |
| 9383 | 2013-09-14 | Molalla YS Pride White G00 | 0 | PCU Army Black G00 | 1 | OPL Third Division U13 | 0.25 | 4.71 |
| 9295 | 2013-09-08 | Eastside Timbers White G00 | 3 | Molalla YS Pride White G00 | 0 | OPL Third Division U13 | 5.01 | 0.24 |
| 9220 | 2013-09-07 | Westside Timbers Mundial TS G00 | 2 | Molalla YS Pride White G00 | 0 | OPL Third Division U13 | 2.68 | 0.37 |